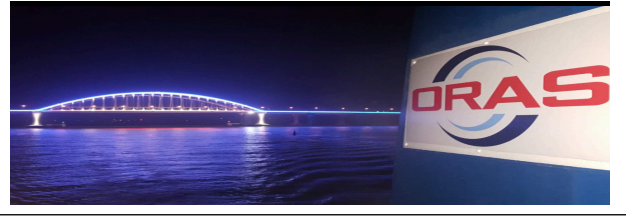


# ORAS Lines

İnkılap Mah. Küçüksu Cad. Kesim Sok. No: 1-3, Kat: 7, D: 13/14,  
Temaş Plaza, 34768, Ümraniye, İstanbul, Türkiye.  
Tel: +90 216 327 42 42 Fax: +90 216 428 72 16  
[operation@orasship.com](mailto:operation@orasship.com)  
[www.orasshipping.com](http://www.orasshipping.com)



**Erhan Cöçmen (Gemi Kiralama Md.)**

[erhan@orasship.com](mailto:erhan@orasship.com) / (05302226697)

**Zeynep Memişoğlu (Kiralama Operasyon)**

[operation@orasship.com](mailto:operation@orasship.com) / (05417997491)

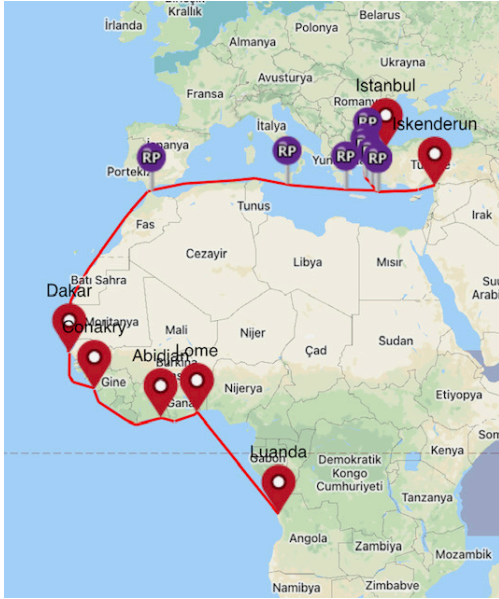
**Kpt. Recep Doğrul (Gemi Operasyon Md.)**

[recep.dogrul@orasagency.com](mailto:recep.dogrul@orasagency.com) / (05439570353)

**Kpt. Hakan Özcan (Gemi Operasyon)**

[hakan.ozcan@orasagency.com](mailto:hakan.ozcan@orasagency.com) / (05549947965)

## Türkiye – Batı Afrika Hattı Muhtemel Programı (\*)



**Istanbul**

**: 15-20 Nisan 2021**

**Izmir**

**: 18-23 Nisan 2021**

**Iskenderun/Mersin**

**: 22-27 Nisan 2021**

**Dakar**

**: 10-15 Mayıs 2021**

**Conakry**

**: 12-17 Mayıs 2021**

**Abidjan**

**: 15-20 Mayıs 2021**

**Lome**

**: 17-22 Mayıs 2021**

**Luanda**

**: 22-27 Mayıs 2021**

**(\*) 06.03.2021 Tarihi itibari ile**

## MV "WIND S"

**(Çok Amaçlı, Ambar içi Çift Güverte, Genel Yük, Konteyner, Dökme Yük, Proje Yükleri / Ambar içi ve Ambar Üstü)**



**Yapım Yılı: 2011**

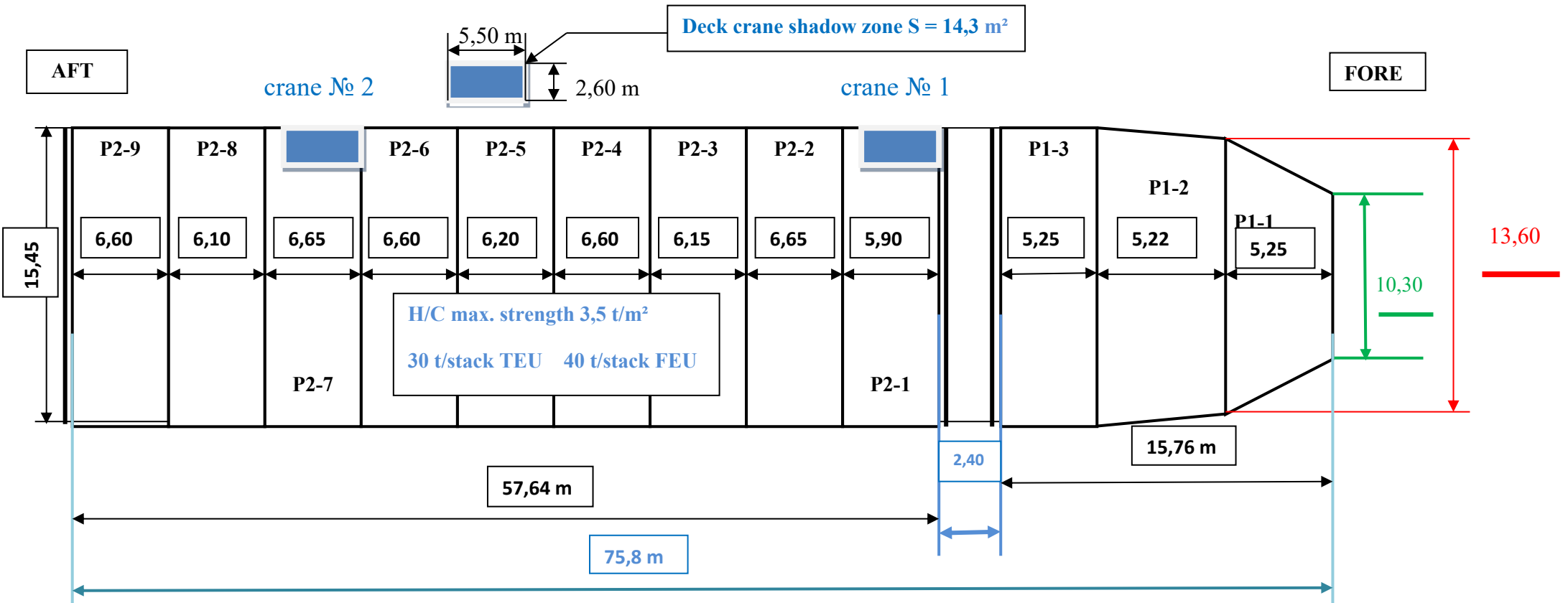
**Taşıma Kapasitesi (Hacim): 10,576 cbm**

**Taşıma Kapasitesi (Dwt) : 7,200 ton**

**Taşıma Kapasitesi (Teu) : 294 Teu**

# M/V "WIND S" Hold Dimensions

## Weather Deck (top view)



↔ 7,0 m Distance between Superstructure and H/C P2-9;

Hold № 1 S total = S net = 219,6 m<sup>2</sup>;

Hold № 2 S total = 891 m<sup>2</sup>; S net = 862,4 m<sup>2</sup> ( due to deck crane shadow zone )

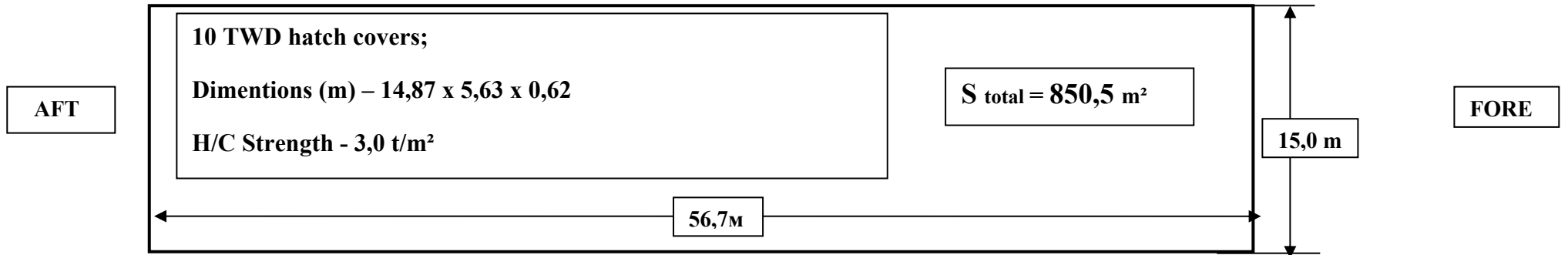
Theoretical number of standart empty TEU:

Hold #1= 32 TEU - 4 tiers; Hold #2= 200 TEU - 4 tiers; Deck= 62 TEU - 1 tier (156 TEU 2/3 tier) TOTAL 294\* TEU (388 TEU)

\* W/O Hatch Covers, oversize, full container load experience etc.

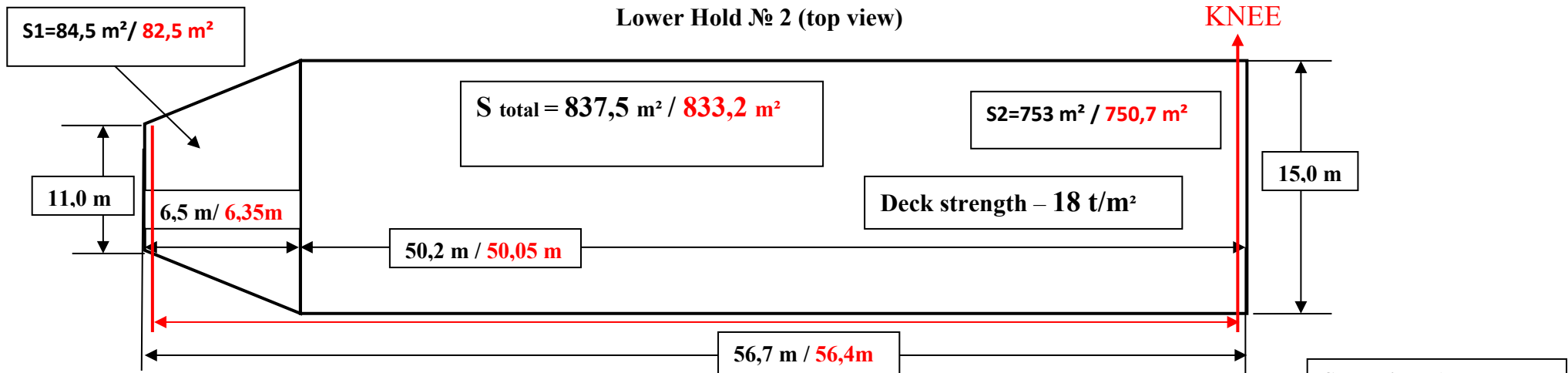
# M/V "WIND S" Hold Dimensions

## Tween Deck № 2 (top view)

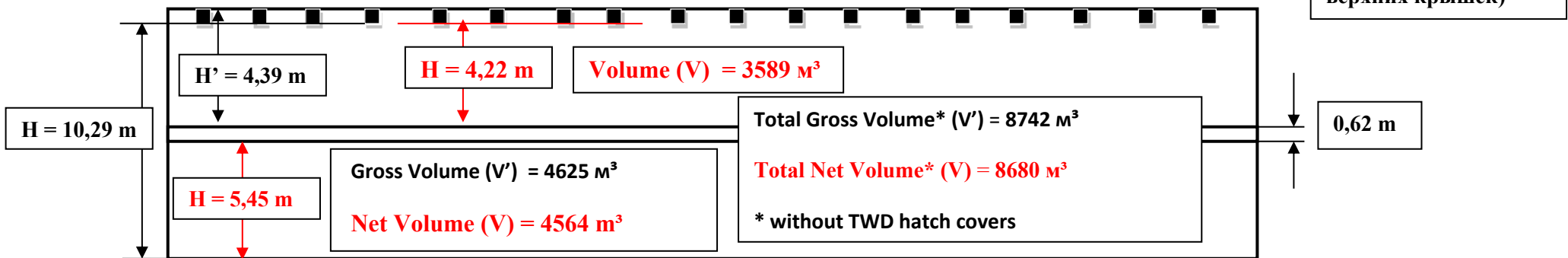


Due to Lower Deck **KNEE** obstacles - it is impossible to PRESS containers, boxes or pallets TO bulkheads in Lower Holds 1 & 2

## Lower Hold № 2 (top view)

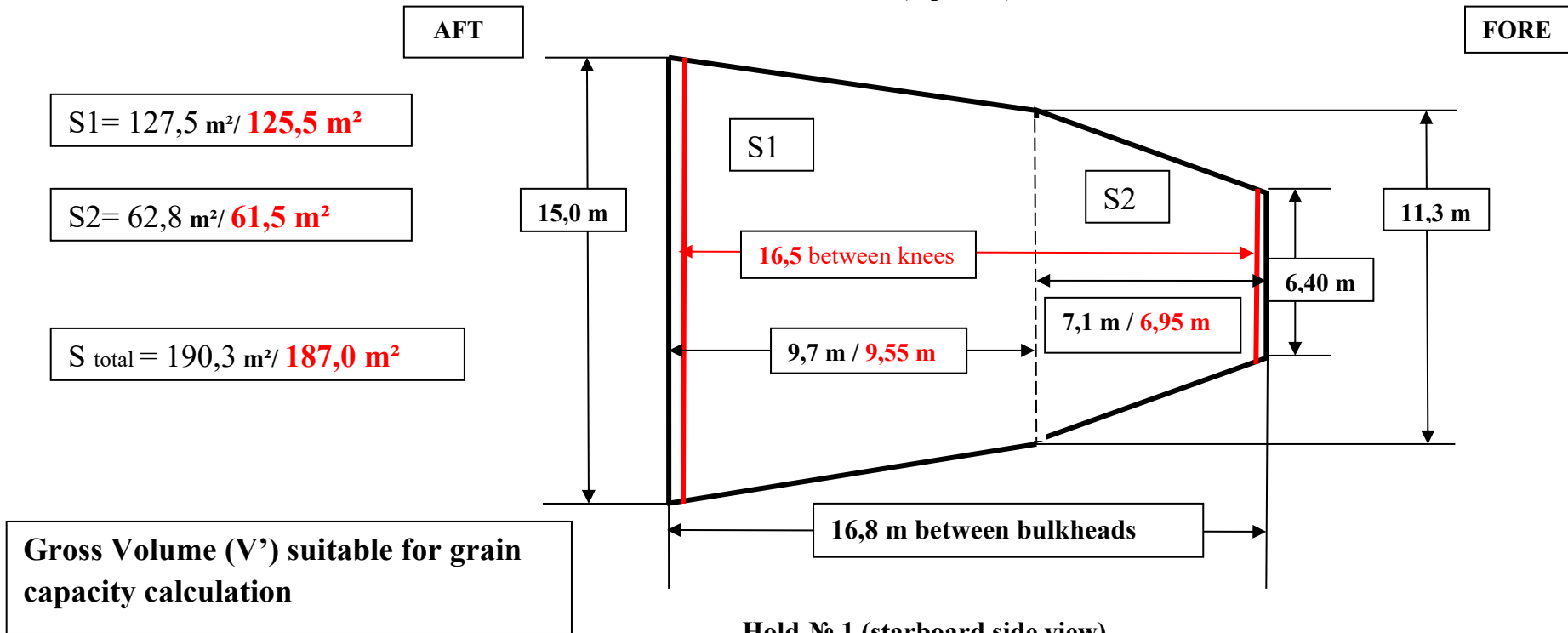


## Hold № 2 TWD & Lower Hold (starboard side view)

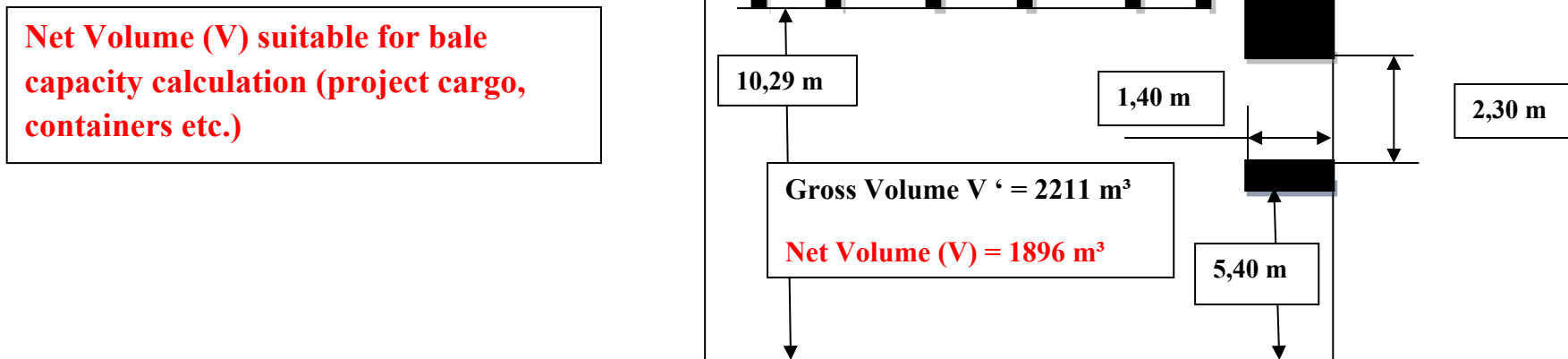


# M/V "WIND S" Hold Dimensions

## Hold № 1 (top view)



## Hold № 1 (starboard side view)



IMO 9630016

**NO SMOKING**









NO SMOKING

IMO 9430016

P2

P4